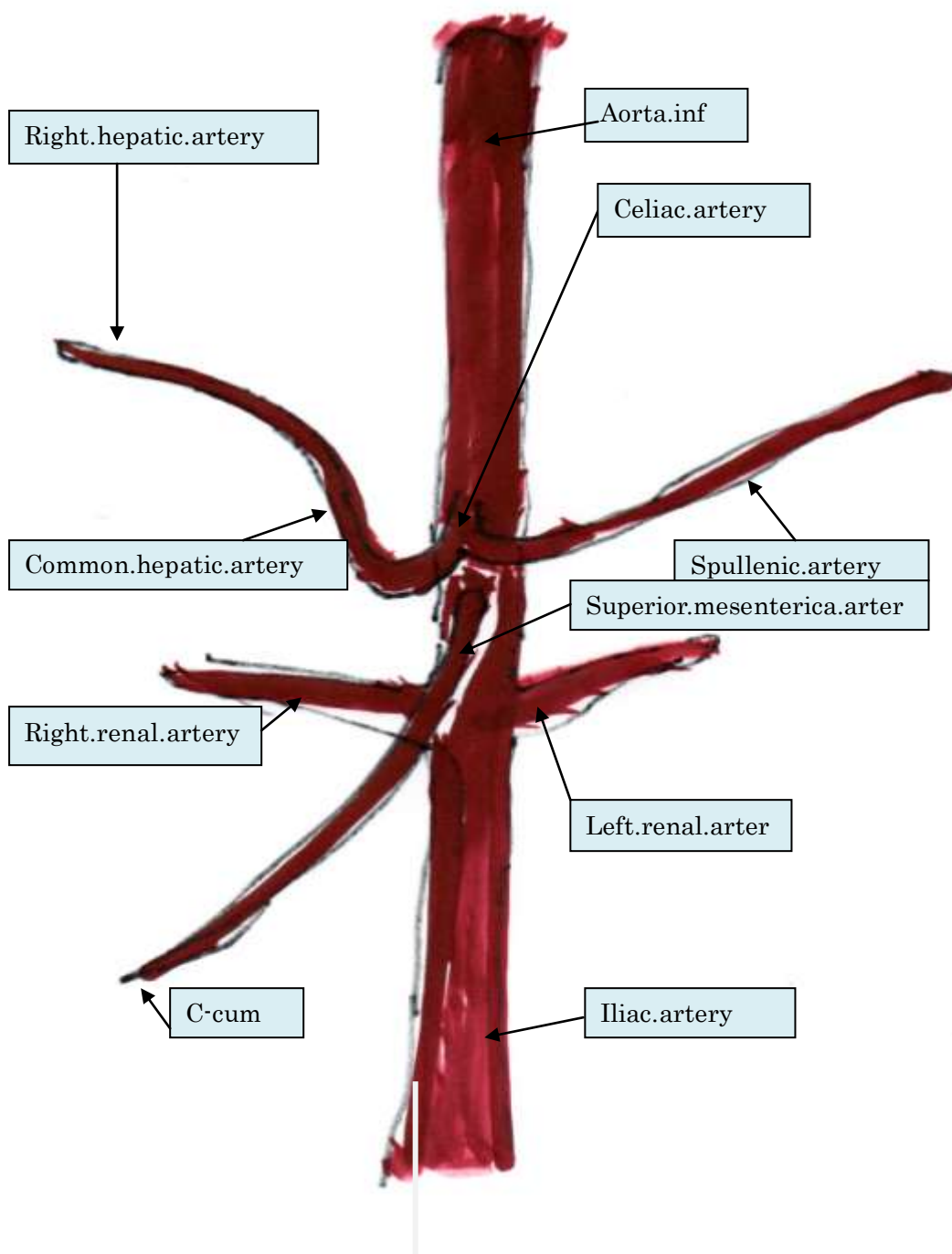
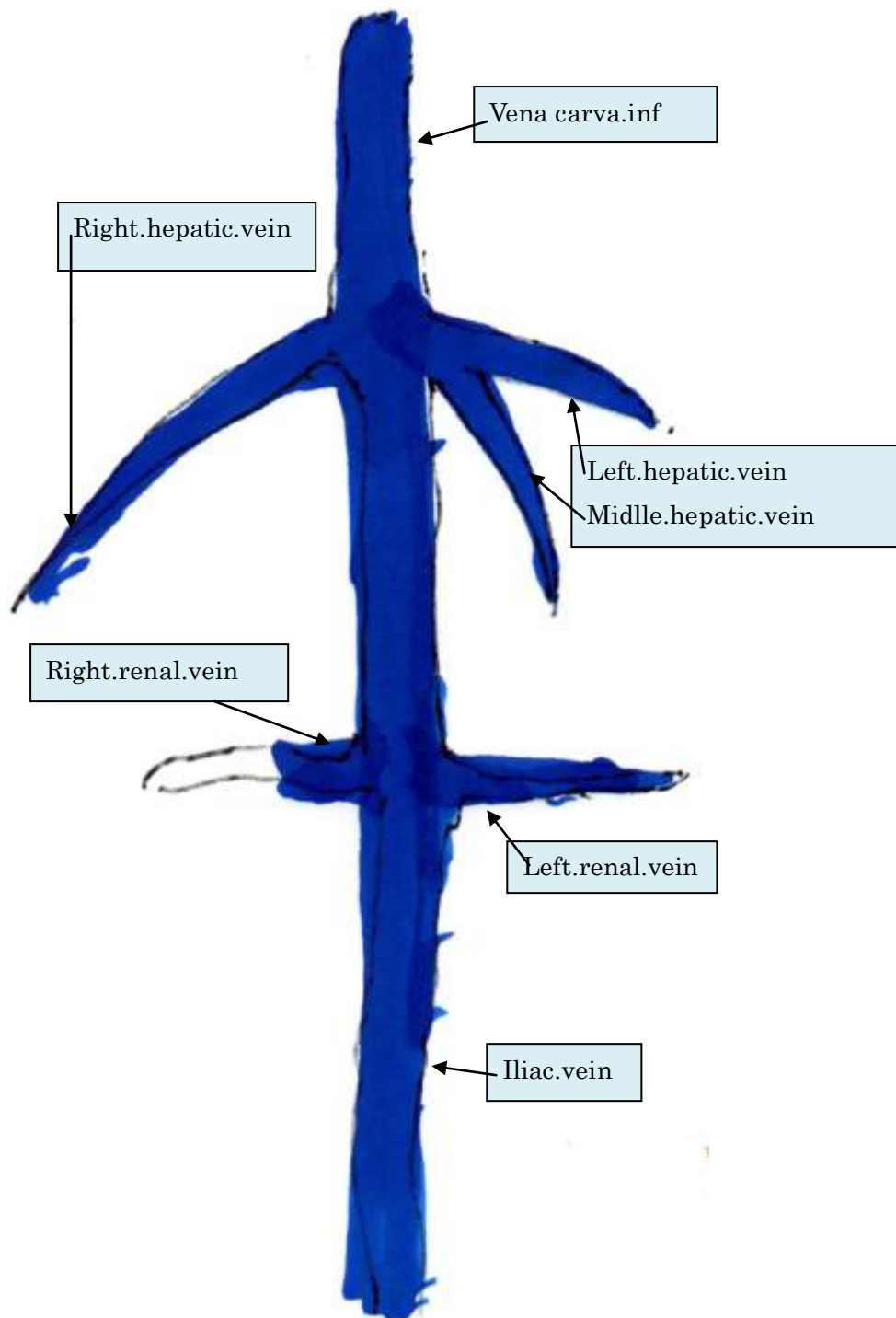


How to make an upper abdominal artery, vein, portal vein, biliary duct solid model

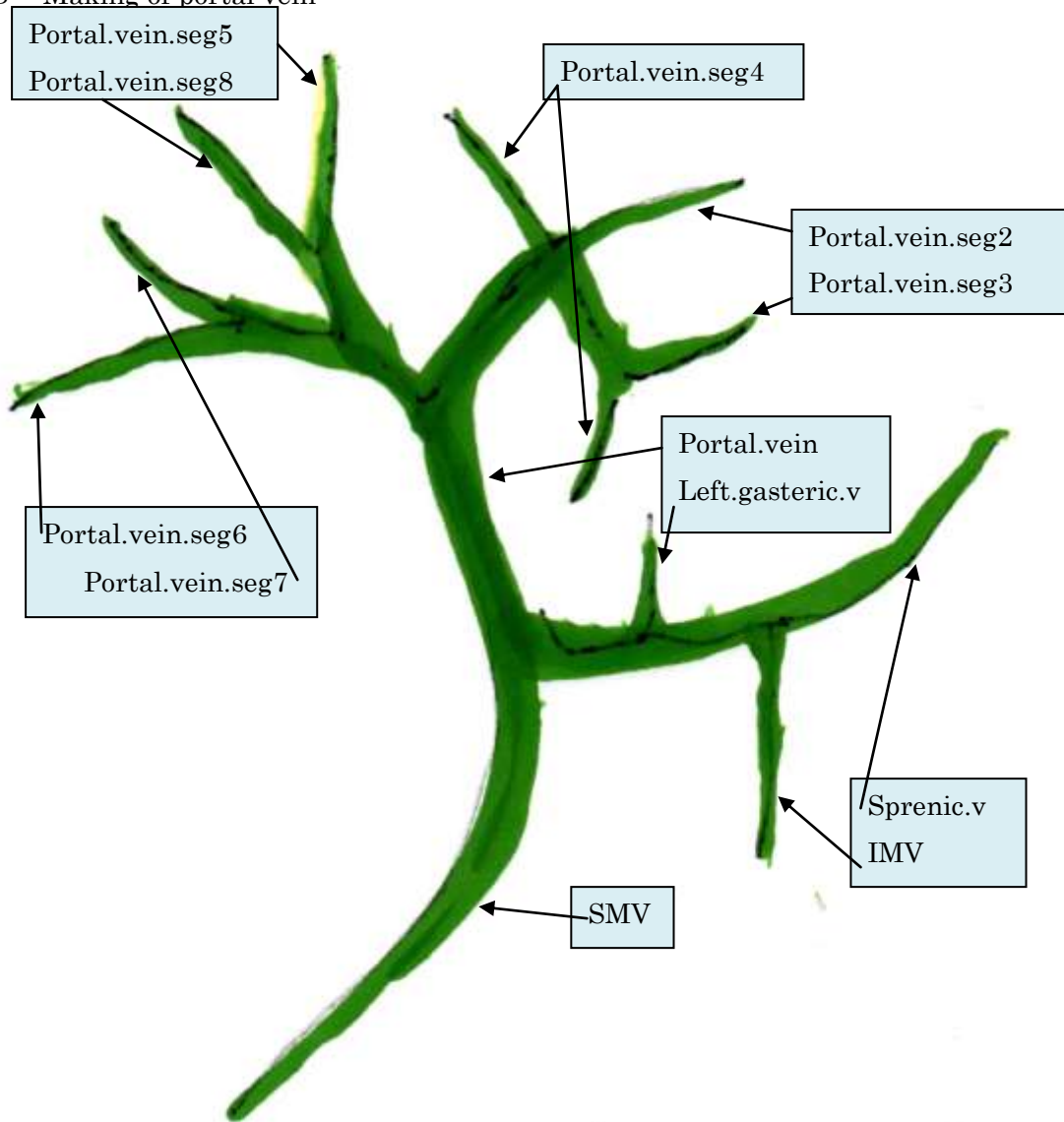
1 Making of artery



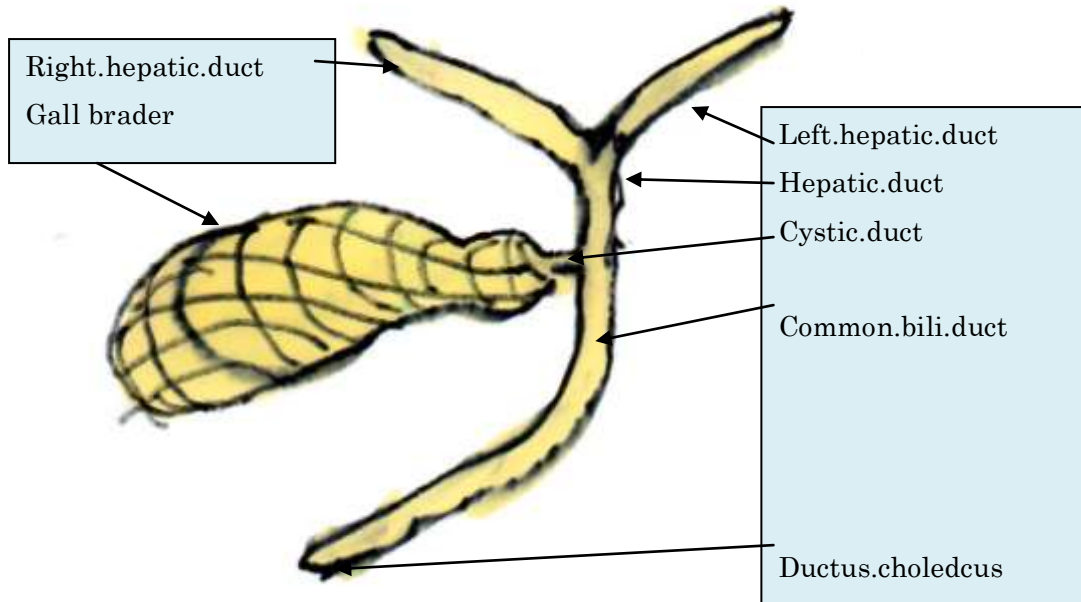
## 2 Making of vein



3 Making of portal vein



#### 4 Making of biliary tract



5 Assembly



- Right.hepatic.vein
- Middle.hepatic.vein
- Left.hepatic.vein
- Portal.vein.seg2
- Left.hepatic.vein
- Portal.vein.seg2
- U-P
- Celiac.artery
- C B D
- SP.artery
- SP.vein
- LG.vein
- IMA



- Portal.vein.seg 7
- Portal.vein.seg2
- Midle.hepatic.vein
- Left.hepatic.vein
- Portal.vein.seg 2
- Portal.vein.seg 4
- Portal.vein.seg 3



Three tube confluence  
 The portal vein and the bile duct parallel run.  
 The right hepatic artery crosses the interval. The portal vein and the bile duct