

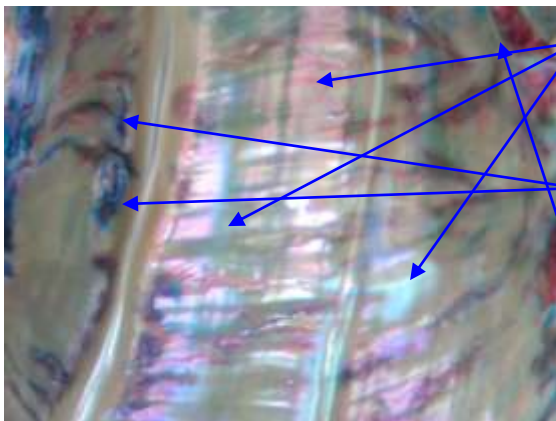
For three-dimensional coloring crafts determined by the luminous shell work volume rendering

June 29, 2014 Shuzou Arakaki URL <http://syuzou.awk.jp/>

Stereoscopic method of medical imaging technology, there are the "surface rendering method" and "volume rendering method". Make (rendering rendering) process to be able to see in three dimensions so as to overlap the color with a transparent layer (modeling modeling) 2-dimensional image in the volume data through repeated shades "Surface rendering method" way to see the surface. The amplified the glow coming from inside a luminous shell Repeat several tens of times the "volume rendering method" is also a way that is visible to the contents by changing the transparency I lists the Yakokai volume rendering crafted color processing method applying the technology this time

The reason for using the material as Yakokai (Luminous shell )

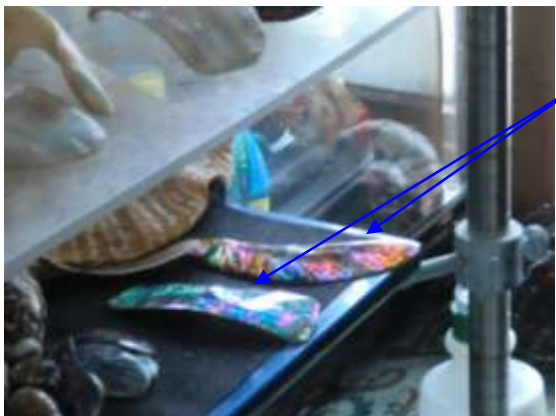
A material having a plurality of layers a transparent layer and a mother-of-pearl, there has properties suitable for volume rendering, features glowing colorful Aurora color also shine of mother-of-pearl, luminous shell work rainbow colors by the multi-layer structure is its features you can emit complicate the shine of camouflage. In order to make the most of its features, and has adopted the rendering technology



The multi-layer structure, brightness is changed by the incident angle of the beam Yakokai

Can be pulled out of the shine off a unique complex scattering of sparkle whenever I repeat rendering as it is to shine.

I will produce a three-dimensional drawing with shine



Shine of pearl layer of Aurora color Yakokai will clarity by the rendering

Make the polishing of nacre to emit a shine to the basic diagonally behind the case of processing the lure of fishing gear there is a law that is to shine

I will describe how to handle them this time

(Age is high, Wakakai the color of the blue line), which is be a good choice of red coloring advantage of shine inside: First, select Yakokai, you choose the one with the thick shell



(Age is high, Wakakai the color of the blue line), which is be a good choice of red coloring advantage of shine inside: First, select Yakokai, you choose the one with the thick shell

Polish alive: secret of Shine

Surface of the best Yakokai will require polishing to issue a nacre surface is covered with symbiotic coral and lime layer



Nacre Yes, many missing holes and unevenness thick shellfish and other corals have symbiotic large Yakokai of ten-year  
Shape is rounded and missing feathers by the impact of the natural world

Remove the symbiosis fouling organisms with a wire brush in the state that I live



Remove the symbiosis fouling organisms with a wire brush in the state that I live

There is necessary to suppress the burning heat of Thunder weak to heat the gloss of the shell: polish Thunder of sandpaper wearing No. 100 in the state that are frozen in a freezer at minus 30 degrees → frozen



I will continue to polish Thunder in a frozen state the luminous shell of large shell thickness in this way. The heat generation rate due to its high Thunder polishing, do little by little surface polishing and polishing → freezing → polishing → freezing → polishing

Yakokai VR rendering design method: VR method is a technology that solid colored drawing by transparency and color



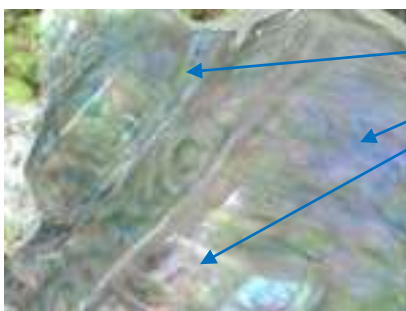
Those shape of shells very good shape polishing maintained  
Irregularity is intensifying because we only polished lime layer on the surface

I polished nacre to come out completely

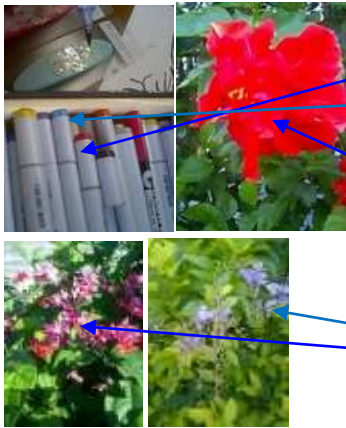


Make the polishing to smooth the unevenness of the surface normal

Base coat to match the shine

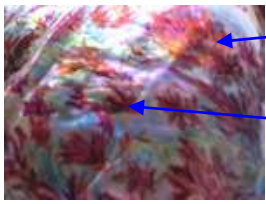


Coloring The first polished with recent degree surface while wiping off the excess paint on the surface to perform the task of impregnating the shine paint pigment in the aquatic



To begin to draw design from fine-grained as possible by using the quality of hair of ChopicSketch, thin and color

The beginning of the design, the VR: Because the volume rendering method, then proceed to stack is painted to match the design one by one color from a light color



**Draw in the image of a large back design**

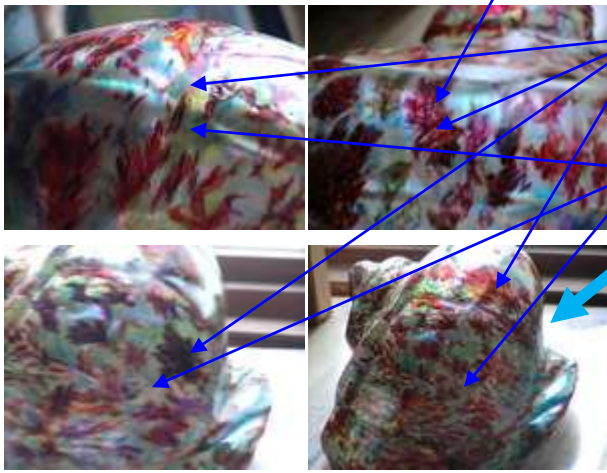
The overlaid delicate imaging

I will do the coating of the transparent layer after draw up every time

The overlaid delicate imaging

I'll repeat a few dozen times and colored transparent layer coating → drying

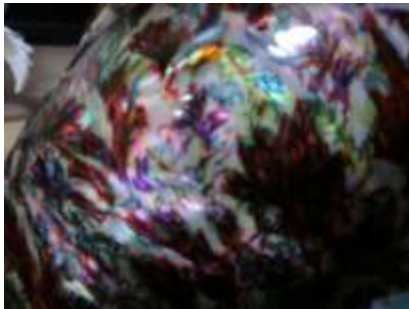
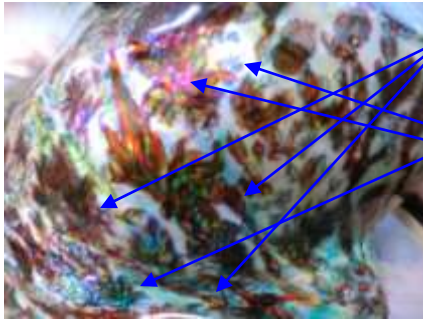
**Note) transparent layer coating is contraindicated day in moisture**



You kept the volume and proceed to stack in addition every time the transparent layer processing of a transparent paint by changing the tint slowly be patient: Please be sure to day with low humidity and clear sky at the time of application of attention transparent layer resin, a rainy day transparent layer is semi-transparent to cloudy water and moisture can

Make the following coloring it after thoroughly dried after application of the transparent layer

## Add SR rendering



SR Rendering is a technique that stereoscopic viewing is to have a sense of perspective by the light and shadow in modeling thin line drawing. We will maximize the shine wide bandwidth of the transparent layer inside that was overlaid on multiple layers and internal scattering of luminous shell eventually to proceed to stack the modeling design that give a three-dimensional impression by a thin dark line.

Because it brings the shine-bandwidth, requires the (solar) rays broad bandwidth light fixtures Morning, noon, and has a feature that changes is various depending on the rays of the evening.

**Note) Digital Photography You will only be able to see with the naked eye: you can not shine the actual up bandwidth is narrow Digital Photography**

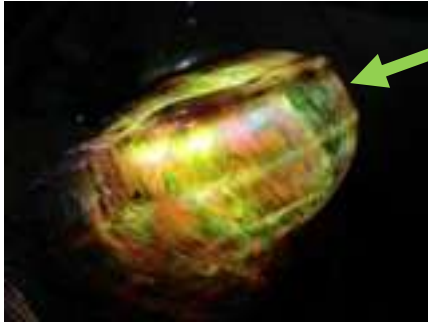
We will pull out the wonderful glow of luminous shellfish unique internal scattering increases due to this treatment will make the edging of dark color to bring out the brilliance of Yakokai

I'll repeat a few dozen times and colored transparent layer coating → → drying

Basic will continue to gently draw out the full radiance of luminous shell eventually to proceed to stack the modeling design that give a three-dimensional impression by a thin dark line for reflections and thin coats of color

You can by the enhancement of the internal scattering of light and the entrance and enjoy a wide range of gradation colors light in accordance with the angle to look at. Lighting will require a beam-bandwidth as well as sunlight

I enjoy as luminous shell lamp



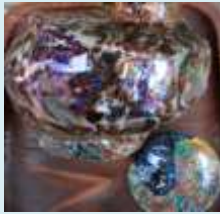
I enjoy the production of the light transmitted through the unique VR, the SR and design of Yakokai Install a lamp inside at night

Note)

I must use the bulb vulnerable to heat, no heat generation takes advantage of the LED bulb 1W power products shine Yakokai own

Special processing my products It's put the processing start date and sign the part of the internal opening (VR, SR gradation processing) of shellfish: we put attach a design

Products: Yakokai VR, SR lamp design method




Provider : ShuzouArakaki: Producer  
ShuzouArakaki, Sign=syu

*Title:Resplandor de la pasión infinita floración*

(Title shine Spanish, of infinite passion flowering)

Provider : ShuzouArakaki: Producer ShuzouArakaki, Sign=

Material Okinawa landed three kilograms weight luminous non-thermal shell polishing process: aqueous base coat paint

: CopicSketch :: Asahi pen transparent lacquer 

21 times the transparent layer processing: 20 times piled construction method VR VOLUME rendering color

Once SR surface modeling rendering line drawing processing

5 times finishing transparent layer overlaid processing

(Yukkanuhi Minatogawa sea god Lunar Festival May 4) June 1, 2014: dedication date

Final finishing stage 15, currently scheduled June of August around: finish the day